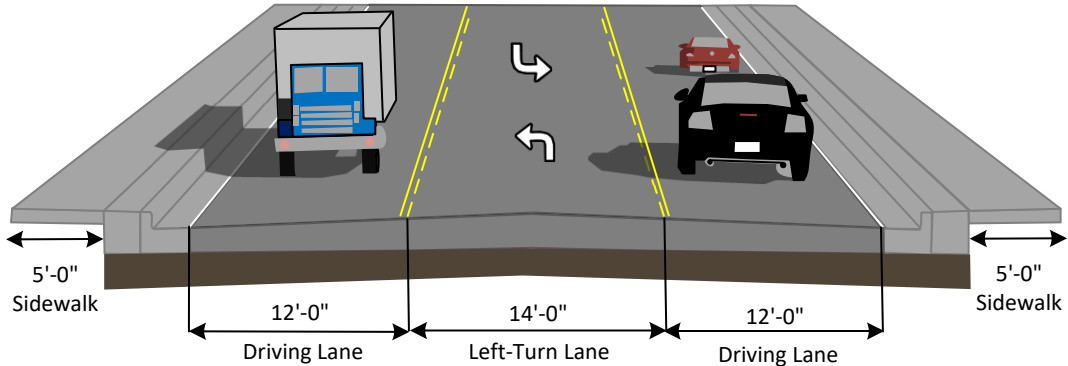
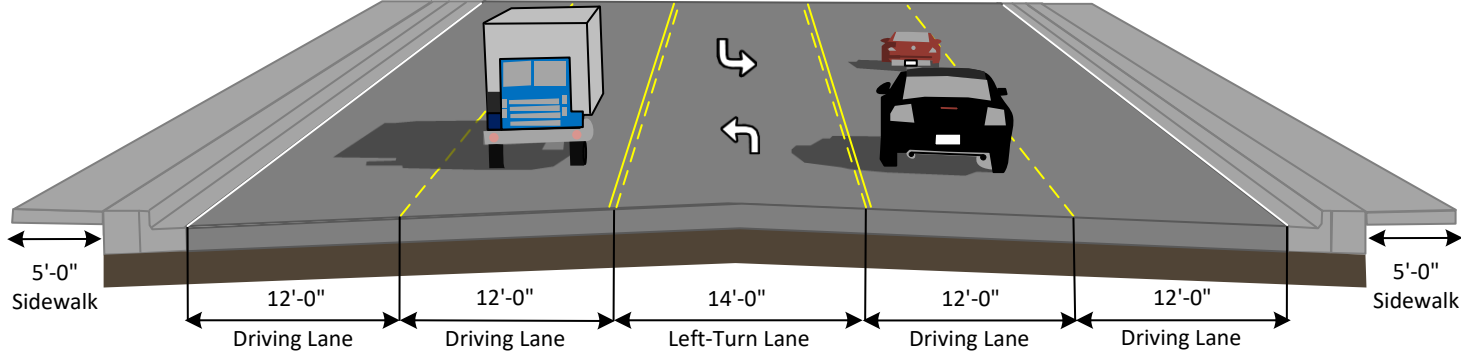


Proposed Roadway Sections

3-Lane Curb-and-Gutter Typical Roadway Section
Typical includes: two 12-foot-wide driving lanes; 14-foot-wide turn lane; two 5-foot-wide sidewalks.



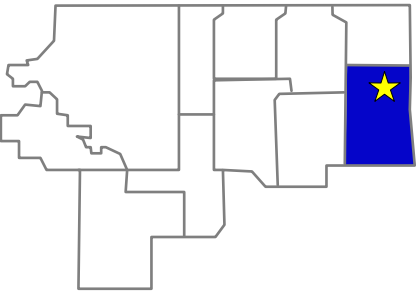
5-Lane Curb-and-Gutter Typical Roadway Section
Typical includes: four 12-foot-wide driving lanes; 14-foot-wide turn lane; two 5-foot-wide sidewalks.



District 8

ODOT District 8 Engineer:
Trapper Parks, P.E.

Delaware County,
Oklahoma

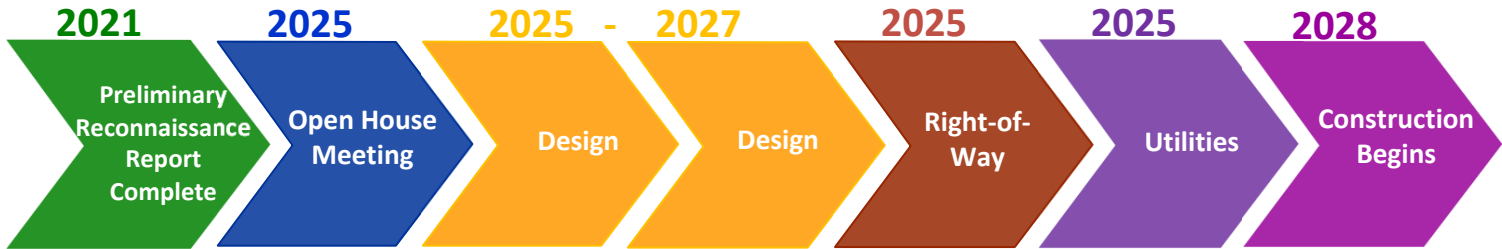


Total Road Miles*: 1,660.26
Total Interstate Miles*: 39.68
Total Bridges**: 1,107

Counties: Craig, Creek, Delaware, Mayes, Nowata, Osage, Ottawa, Pawnee, Rogers, Tulsa, Washington

*Totals DO NOT include Toll Roads
**Totals DO NOT include County Bridges

Important Dates



For more information about this project, contact:
(405) 325-3269 or Engage@odot.ok.gov



PUBLIC OPEN HOUSE

April 29, 2025

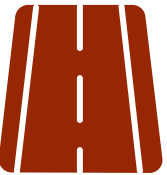
IMPROVEMENTS TO SH-10 IN GROVE FROM THE US-59
INTERSECTION & EXTENDING EAST TO SH-25
Delaware County, JPs 33827(04) & 32699(04)

Location: Grove Community Center | 104 W 3rd St. | Grove, OK 74344
When: 4:00 pm - 6:00 pm



MEETING PURPOSE

To learn about upcoming road work on SH-10. Share your thoughts and ask questions about the project.



PROJECT DESCRIPTION

ODOT and the FHWA plan to improve SH-10 between Main Street (US-59) and SH-25 in Delaware County, OK. The changes will make the road safer and reduce traffic.

The road needs repairs because:

- The pavement is wearing out.
- Sidewalks aren't accessible to all users.
- Daily traffic will reach 18,200 vehicles by 2050.

To fix these issues, ODOT plans to make the following improvements:

- SH-10 from Main Street to Hazel Street will be repaved and restriped.
- A 3-lane roadway will be built from Hazel Street to just east of St. Andrews Dr. It will have two 12-foot-wide driving lanes and a 14-foot-wide center turn lane.
- After St. Andrews Dr., SH-10 will be widened to be a five-lane roadway. It will have four 12-foot-wide driving lanes and a 14-foot-wide center turn lane.
- The five-lane roadway will extend to just west of the SH-25 junction.
- Through the SH-25 junction, SH-10 will change to a three-lane roadway.
- Upgraded sidewalks will be added from Hazel Street to Ford Road.
- Ditches and storm sewers will be improved to drain properly.
- Culverts will be replaced or extended to match the bigger roadway.
- Angled intersections, drives and entrances will be straightened.

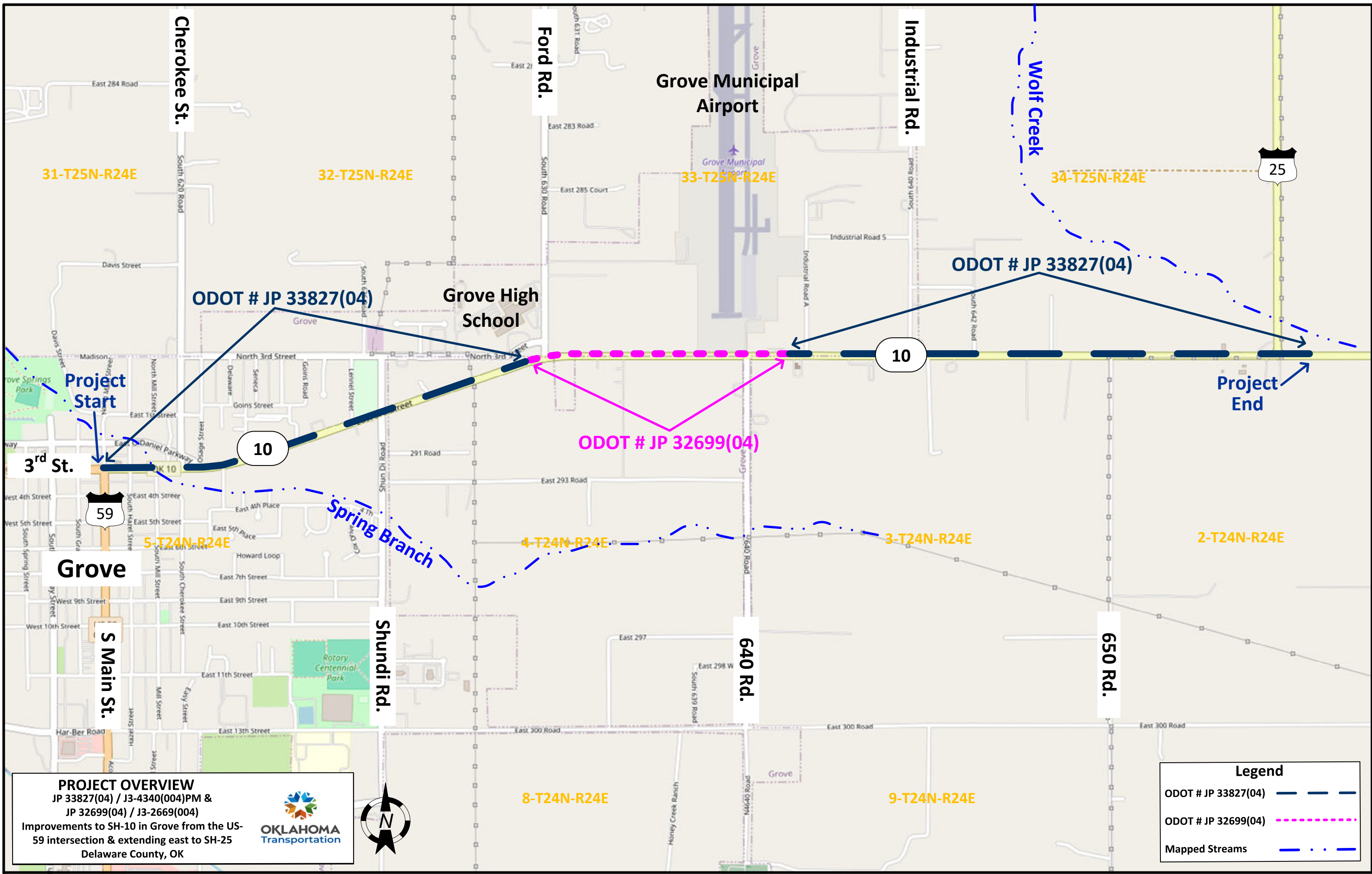
The road will stay open during construction. You will have access to homes, businesses and the school.

PLEASE PROVIDE YOUR COMMENTS BY
MAY 13, 2025


Submitted comments are subject to public review.
Personal information will not be shared.



www.odot.org/PublicMeetings



PROJECT OVERVIEW
JP 33827(04) / J3-4340(004)PM &
JP 32699(04) / J3-2669(004)
Improvements to SH-10 in Grove from the US-
59 intersection & extending east to SH-25
Delaware County, OK



OKLAHOMA
Transportation

Legend

ODOT # JP 33827(04) — — —

ODOT # JP 32699(04) - - - - -

Mapped Streams - . . -